

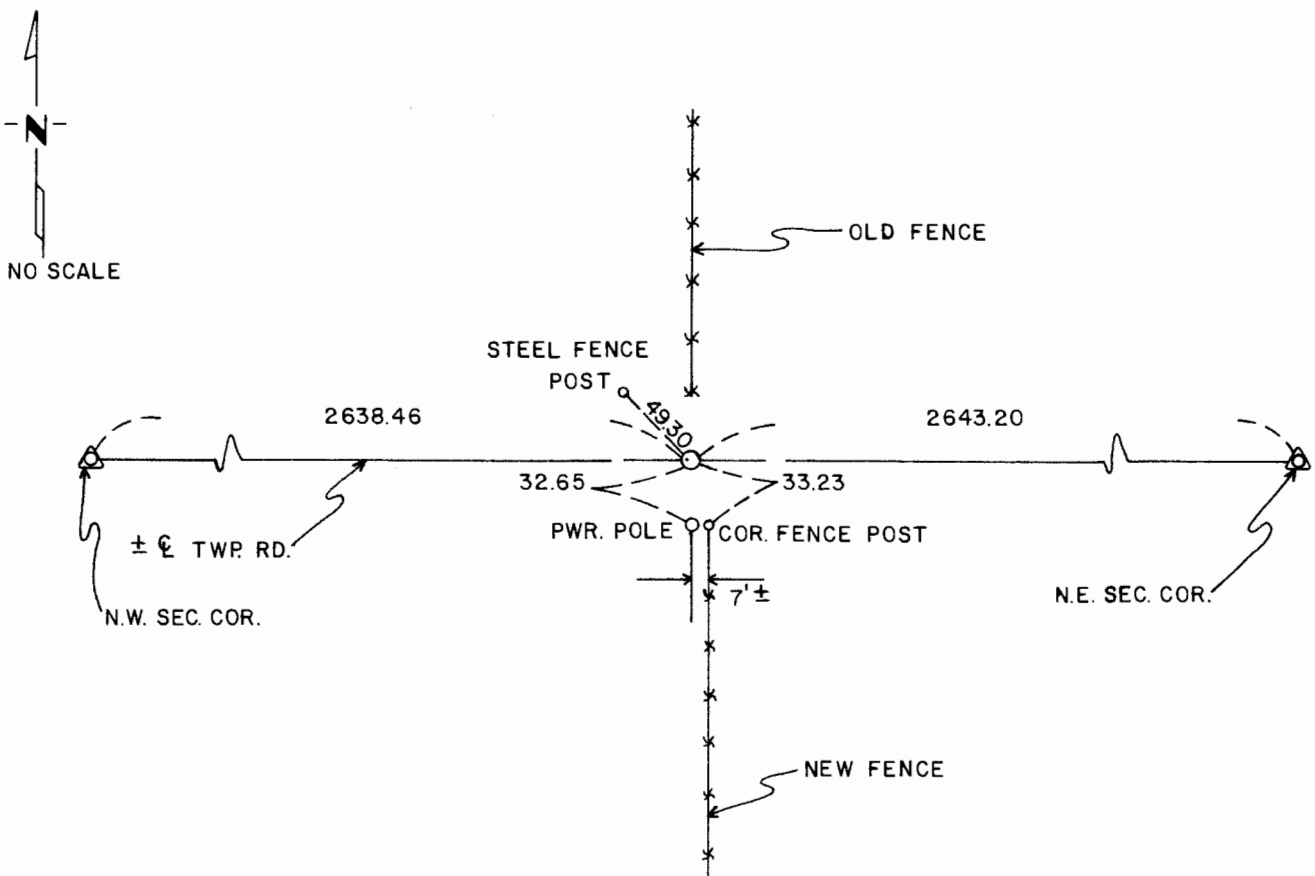
CERTIFICATE OF LOCATION OF GOVERNMENT CORNER

NORTH QUARTER Corner of Section 3, Township 105 N., Range 42 W., 5th P.M.
 STATE OF MINNESOTA, County of MURRAY

At the corner location shown on the sketch:

- On _____ found a _____
DATE
- left monument as found, lowered monument, removed monument (explain)
- On 4/5/78 placed a 1/2" iron pipe with "Martin R.L.S. 12967"
DATE
yellow plastic cap.

SKETCH OF REFERENCE TIES



Statement of evidence relative to this corner location is on back of page.

I hereby certify that this document and the data contained herein was prepared by me or under my direct supervision.

Shirley S. Martin 6/19/78
SIGNATURE DATE

Registration No. 12967

- Land Surveyor, Professional Engineer
 County Surveyor, County Engineer

OFFICE OF THE REGISTER OF DEEDS
 County of MURRAY

I hereby certify that this document was filed in the Reg. of Deeds office at _____ .M. on the _____ day of _____ A.D., 19 _____

Register of Deeds _____

By _____, Deputy

DOCUMENT NO. _____

Statement of Evidence:

G.L.O. - Survey by J. W. Myers; completed between June 22, 1861, and Sept. 1861; "deposited charcoal, made mound of earth and sod with trench and pits as per instructions"

Subsequent Resurvey - None of record; excavated for corner well into natural ground and in east-west direction encompassing both the fencelines to the north and south; no evidence of original government corner found in excavation; accepted older fenceline to north and centerline of existing township road as best evidence of original government corner-set corner accordingly; distances to nearest government corner east and west are within 3.2' of G.L.O. chainage.

164265

State of Minnesota }
County of Murray, }

I hereby certify that the within instrument was filed in this office for record on the

7th day of August A.D. 19 81,

at 8:30 o'clock A.M., and was duly re-

corded as Microfilm Document No. 164-265

Willard W. Ohme

County Recorder